


- ❑ For use in conjunction with Broyce "Type A" Earth Leakage Relays
- ❑ Designed to detect leakage current and transmit a proportional signal to an Earth Leakage Relay
- ❑ Suitable for installations that use busbars



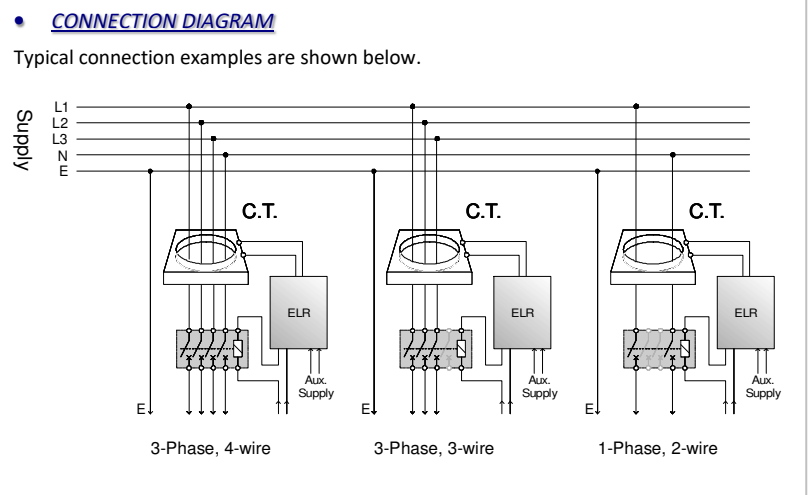
INSTALLATION

 Installation work must be carried out by qualified personnel.

- BEFORE INSTALLATION, ISOLATE THE SUPPLY TO THE BUSBARS/CONDUCTORS THAT ARE TO BE PASSED THROUGH THE TOROID.
- Installation of the toroid, along with the Earth Leakage Relay must be carried out in accordance with the latest wiring practices and regulations.

TECHNICAL SPECIFICATION

Size availability* and part number:	150 x 350mm (BZCTR350) 160 x 470mm (BZCTR470)
* internal aperture	
Rated system voltage:	720V AC
Insulation level:	3kV AC
Current ratio:	1/1000
Max. permissible current:	2kA (BZCTR350) 2.5kA (BZCTR470)
Minimum IΔn setting on ELR:	1A
Max. Distance:	50m (Between toroid and ELR)
Ambient temperature:	-10 to +50°C
Relative humidity:	+95%
Housing:	BZCTR350 Self-extinguishing, shock resistant black ABS BZCTR470 Resin cast, natural finish
Mounting:	BZCTR350 Using fixing slots provided on metal bracket BZCTR470 Using 4 x 9mm corner holes
Approvals:	CE & UKCA Compliant. cUL (when used in conjunction with ELR01PN or ELR30PN)



- INSTALLATION GUIDANCE**
- Correct installation of the Earth Leakage Relay and toroid should ensure trouble free operation, in particular, if this document is followed.
1. Always ensure the Earth conductor DOES NOT pass through the toroid. If this is unavoidable, the Earth must be routed back through the toroid again and around.
 2. DO NOT pass individual conductors through separate toroids.
 3. Ensure the busbars are central in the toroid (see Fig. 1).
 4. Place the toroid on a straight section of the busbars, not near a bend.
 5. Keep the cable and toroid away from intense magnetic fields from nearby equipment.

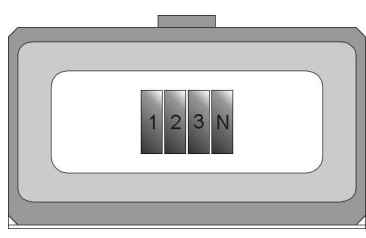


Fig. 1

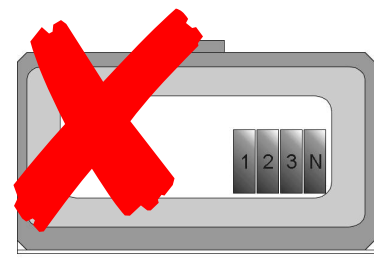
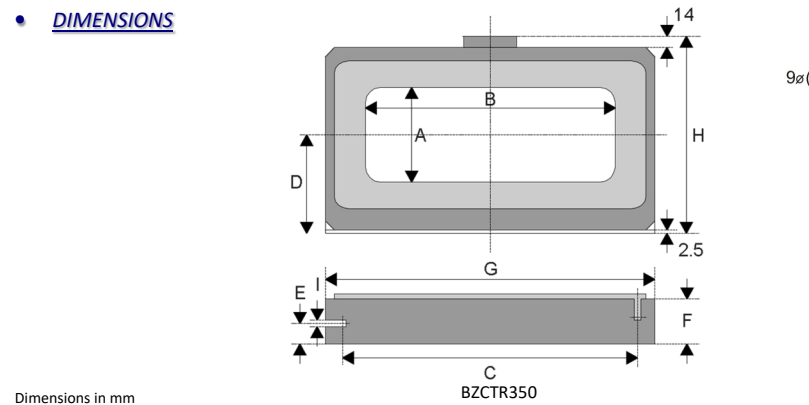
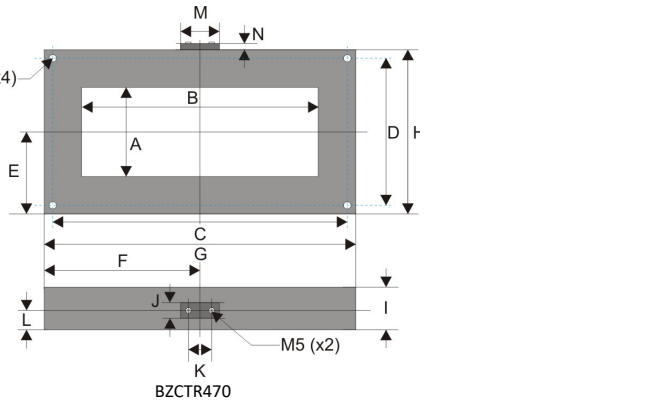


Fig. 2



Dimensions in mm



Toroid Type:	A	B	C	D	E	F	G	H	I	J	K	L	M	N	Weight
BZCTR350	150	350	415	140	28	55	460	285	8						7.40kg
BZCTR470	160	470	552	242	131.5	286	572	263	72	32	40	36	80	8	14kg

Tolerances = ±0.1